

Connector ZM-MINI-180

Ref. 44501

APPLICATION

- connecting bent lighting fixtures into runs at an angle of 180 degrees

MONTAGE

- to the profile, with a small lock and pressure screws (included)



TECHNICAL SPECIFICATIONS

Material stainless steel Color ■ silver

RELATED PROFILES



3035
18039



3035-O
B8441



4050
18050



4050-W
18051



GIZA
B5556



GIZA-DUO-LL
C2162



GIZA-LL
C0758



GLAZA-LL
C2627



JAZ
B8547



KOPRO-30
B7890

Connector ZM-MINI-180

Ref. 44501



LOC-30
18015



OLEK
B8505



OPAC-30
B6164



PDS-ZM
B7696



PDS-ZM-PLUS
C2056



PDS-ZMG
C1418



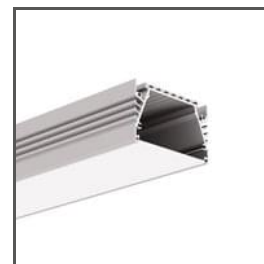
PIKO-ZM
C1168



RAM-KOL-100
18062

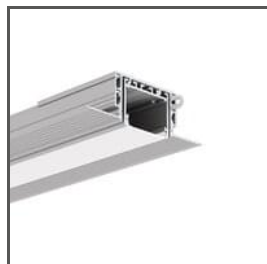


RAM-KOL-50
18060



SEPOD
B6593

RELATED SYSTEMS



3035-KOZE
18056+B8441



MOD-KOL-100
18062+18058



MOD-KOL-50
18060+18053