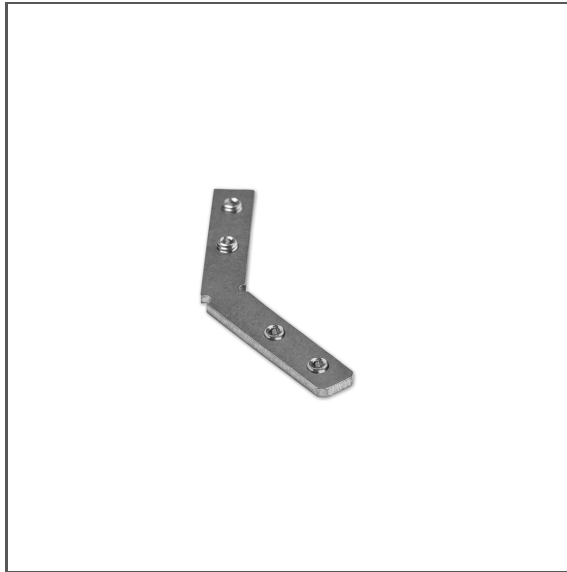


# Connector ZM-135-G

Ref. 42310



- Possibility to manually adjust the sections of the profile to be joined

## APPLICATION

- connecting lighting fixtures into runs at an angle of 135 degrees

## MONTAGE

- to the profile, with a small lock and pressure screws (included)

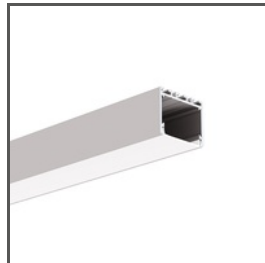
## TECHNICAL SPECIFICATIONS

Material	stainless steel	Thickness	1.5 mm
Color	 silver		

## RELATED PROFILES



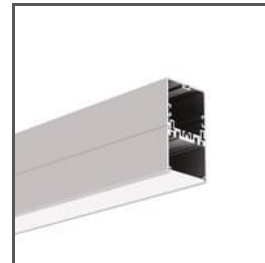
**3035**  
18039



**3035-O**  
B8441



**4050**  
18050



**4050-W**  
18051



**GIZA-DUO-LL**  
C2162



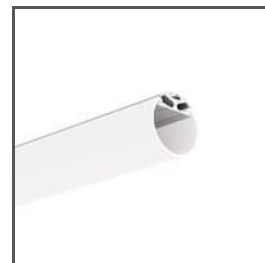
**GIZA-LL**  
C0758



**GLAZA-DUO**  
C3059



**GLAZA-LL**  
C2627



**JAZ**  
B8547



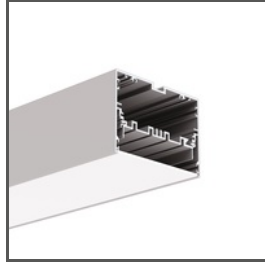
**KOPRO-30**  
B7890

# Connector ZM-135-G

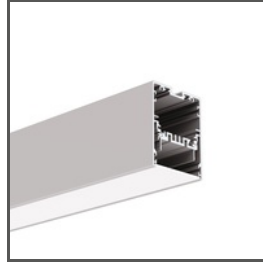
Ref. 42310



**LARKO-50**  
C0756



**MOD-100**  
18049



**MOD-50**  
18047



**OLEK**  
B8505



**OPAC-30**  
B6164



**OPK-4**  
C0370



**PDS-ZM**  
B7696



**PDS-ZM-PLUS**  
C2056



**PDS-ZMG**  
C1418



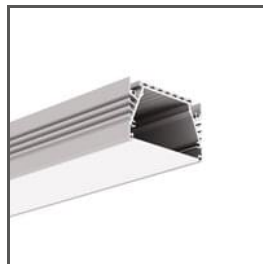
**PIKO-ZM**  
C1168



**RAM-KOL-100**  
18062

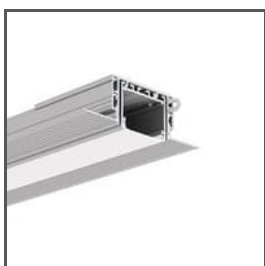


**RAM-KOL-50**  
18060

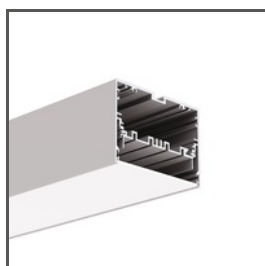


**SEPOD**  
B6593

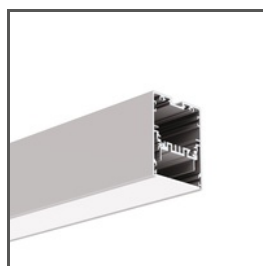
## RELATED SYSTEMS



**3035-KOZE**  
18056+B8441



**MOD-100**  
18049



**MOD-50**  
18047



**MOD-KOL-100**  
18062+18058



**MOD-KOL-50**  
18060+18053



**PK-4**  
18044+C0370