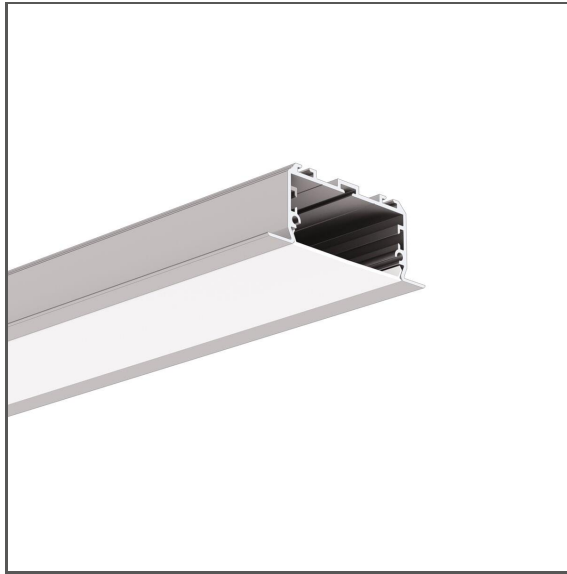


# Profile LARKO-50

Ref. C0756



- Mounting to drywall
- High lumen output
- Invisible groove edge

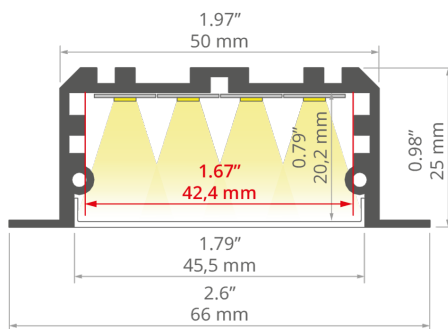
## APPLICATION

- main and decorative lighting

## MONTAGE

- recessed, using dedicated accessories
- can be easily connected into runs

## TECHNICAL DRAWING



## TECHNICAL SPECIFICATIONS

Material	aluminum	Length	Ref
Color	■ silver anodized	1000 mm	C0756ANODA_1
With the possibility of sealing up to IP	20, 65	2005 mm	C0756ANODA_2
Possible shapes of the luminaire	polygonal	3010 mm	C0756ANODA_3
LED gluing width A	42 mm		
Number of LED strips A (8 mm wide)	5		
Width	66 mm		
The cover is cut to the length of the profile	yes		
Can be easily connected into runs	yes		
Main lighting	yes		
Decorative lighting	yes		
Functional lighting	yes		

# Profile LARKO-50

Ref. C0756

Mounting to drywall yes

Wire out back of extrusion yes

## SAMPLE PROJECTS



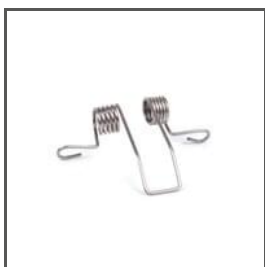
## COVERS

NAME	MATERIAL	MATERIAL TRANSMITTANCE	COLOR	REF.
LIGER-50	PC	70	<input type="checkbox"/> frosted	17086
		31	<input checked="" type="checkbox"/> black	17089

## END CAPS

NAME	MATERIAL	COLOR	REF.
LARKO-50	PP	<input checked="" type="checkbox"/> gray	24298

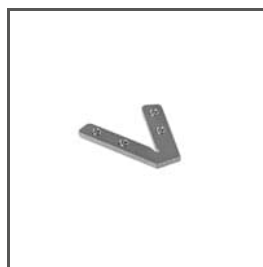
## OTHER ACCESSORIES



SPRING  
**KMA**  
00838V1



CONNECTOR  
**ZM-180**  
42717



CONNECTOR  
**ZM-PION-45**  
42314



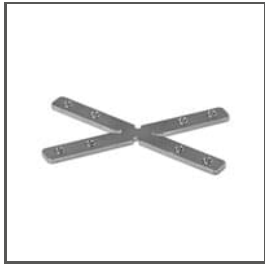
CONNECTOR  
**ZM-Y120-G**  
42336



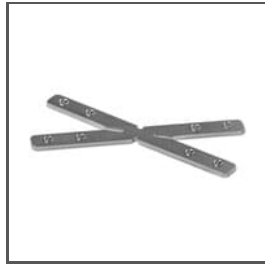
CONNECTOR  
**ZM-X90-G**  
42334

# Profile LARKO-50

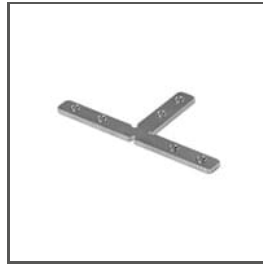
Ref. C0756



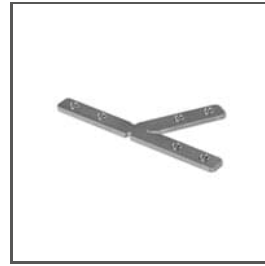
CONNECTOR  
**ZM-X60-G**  
42332



CONNECTOR  
**ZM-X45-G**  
42330



CONNECTOR  
**ZM-T90-G**  
42328



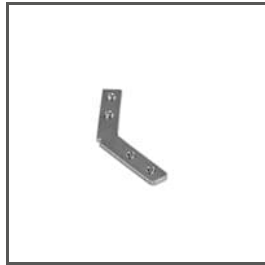
CONNECTOR  
**ZM-T60-G**  
42326



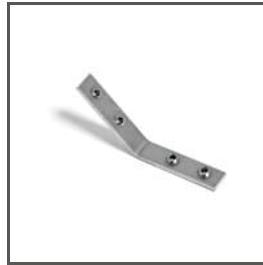
CONNECTOR  
**ZM-T45-G**  
42324



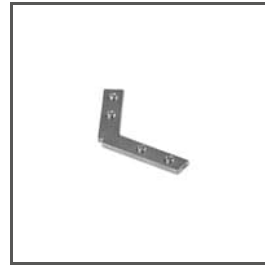
CONNECTOR  
**ZM-PION-120**  
42320



CONNECTOR  
**ZM-135-G**  
42310



CONNECTOR  
**ZM-PION-135**  
42719



CONNECTOR  
**ZM-120-G**  
42308



CONNECTOR  
**ZM-90-G**  
42306



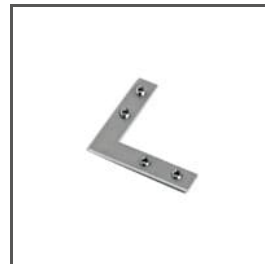
CONNECTOR  
**ZM-60-G**  
42304



CONNECTOR  
**ZM-45-G**  
42338



CONNECTOR  
**ZM-120**  
42728



CONNECTOR  
**ZM-90**  
42716



CONNECTOR  
**ZM-PION-90**  
42718



CONNECTOR  
**ZM-135**  
42720



GLAND  
**6,4x3**  
42264



CONNECTOR  
**ZM-60**  
42736



MASKING COVER  
**MP-50**  
17172, 17172L9010,  
17172L9005